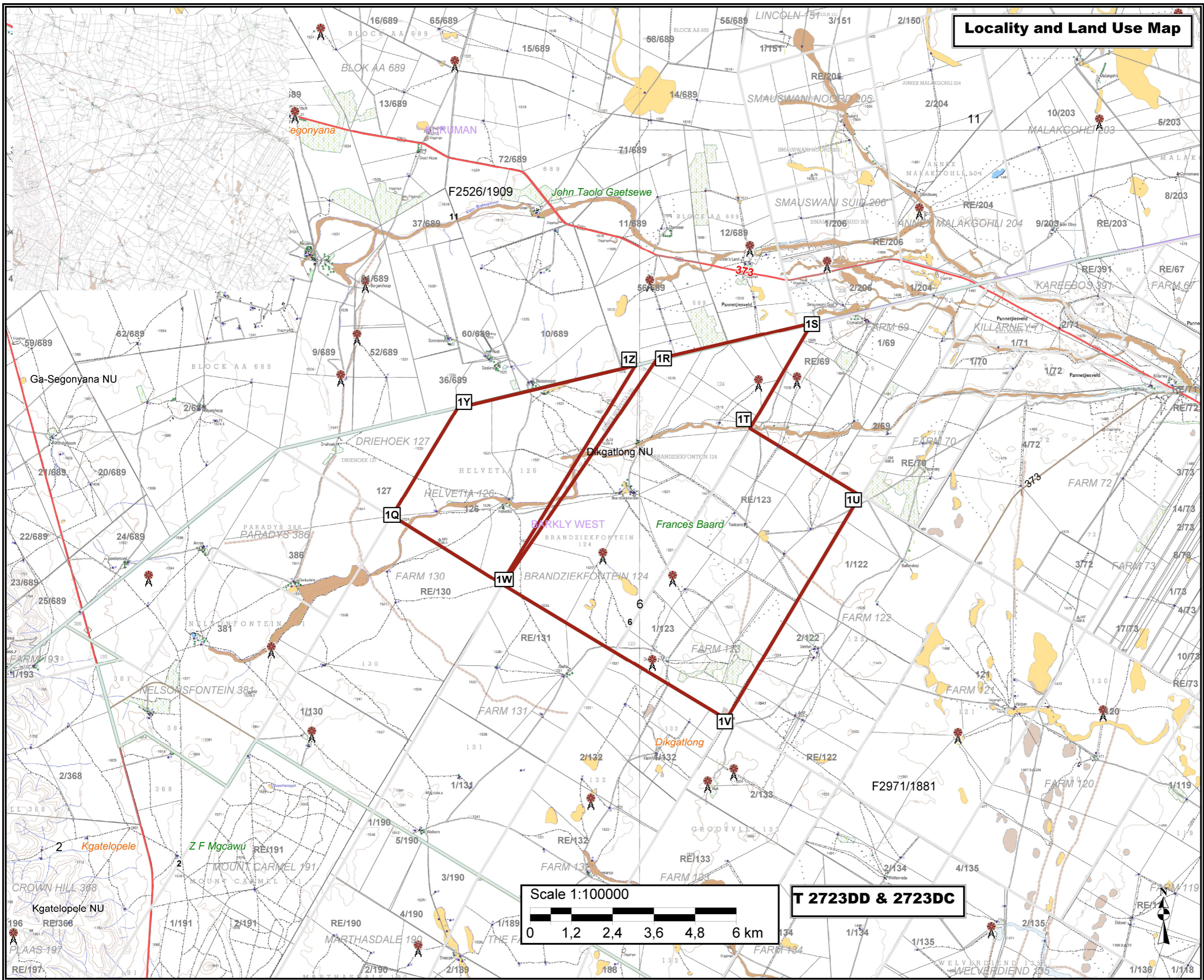


Locality and Land Use Map



- Legend**
- Air transport
 - LANDING STRIP
 - Artificial surfaces
 - DIGGING
 - Inland water
 - PERENNIAL PAN
 - DRY PAN
 - River
 - NON-PERENNIAL CENTER LINE
 - Northern Cape Province
 - Frances Baard - District Municipality
 - Dikgatlong - Local Municipality
 - Wards no - 6
 - BARKLY WEST - Administrative region
 - Farm portions
 - Parent farms
 - Parks
 - Prospecting Right Application Area 1R-1W
 - Prospecting Right Application Area 1W-1Z

The figure numbered 1R1S1T1U1V1W represents :
 Portion 1 and the remaining extent of the farm FARM No.123
 The farm BRANDZIEKFONTEIN No.124
 EXTENT : 6190.8206 hectares
 Being part of an prospecting rights area
 Situated magisterial district of BARKLY WEST

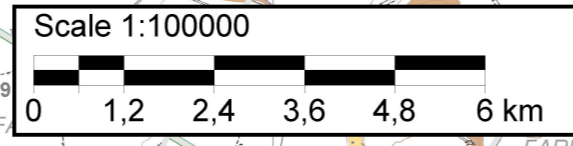
The figure numbered 1W1X1Y1Z represents :
 The farm HELVETIA No.126
 EXTENT : 2099.7785 hectares
 Being part of an prospecting rights area
 Situated magisterial district of BARKLY WEST

Proposed Prospecting area coordinates:

1R -27.810507 °S; 23.754365 °E
 1S -27.80077 °S; 23.800829 °E
 1T -27.82801 °S; 23.782334 °E
 1U -27.845684 °S; 23.815129 °E
 1V -27.903989 °S; 23.77535 °E
 1W -27.868788 °S; 23.709749 °E
 1X -27.851049 °S; 23.676888 °E
 1Y -27.822545 °S; 23.696331 °E
 1Z -27.811657 °S; 23.748634 °E

Client:
 STRATAAFRICA
 EXPLORATION (Pty) Ltd
 REG No. 2007/024251/07

Consultant:

T 2723DD & 2723DC